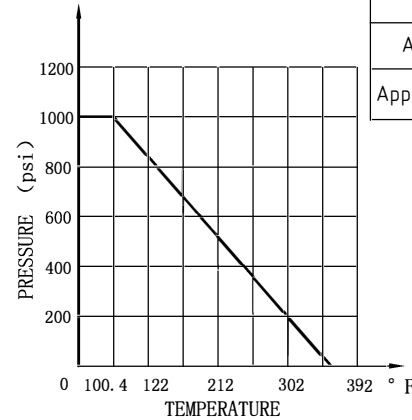
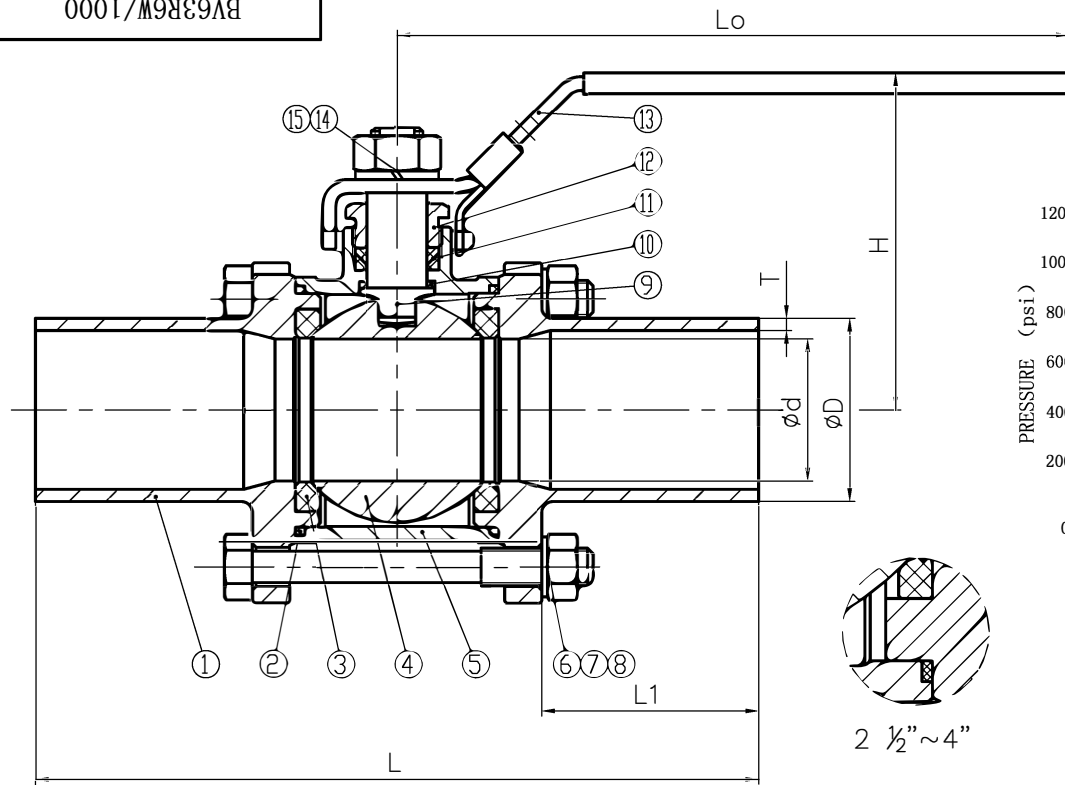


BV63R6W/1000



Nominal pressure			1000Psi				
Test pressure	Shell test	10.4	Mpa	Test medium	Water	Test temperature	Normal temperature
	Seal test	7.6			Air		
	Gas seal test	0.6					
Applicable medium			Water, Oil, Gas				
Applicable temperature			-20~356°F				

NOTE:
 1. Design and Manufacture for valve according to ASME B16.34.
 2. Inspection and Test for valve according to API 598.

NPS	L	L1	d	D	T	Lo	H
1/2"	5.933	2.165	0.591	0.854	0.083	4.134	2.126
3/4"	6.130	2.224	0.768	1.071	0.083	4.724	2.579
1"	7.331	2.677	0.984	1.339	0.110	5.512	2.835
1 1/4"	7.701	2.598	1.260	1.681	0.110	5.906	3.189
1 1/2"	9.118	3.150	1.496	1.913	0.110	6.693	3.780
2"	9.583	3.031	1.929	2.382	0.110	7.283	4.134
2 1/2"	11.425	3.720	2.520	3.004	0.118	8.661	4.724
3"	11.898	3.602	3.031	3.508	0.118	10.623	5.295
4"	12.843	3.563	3.898	4.500	0.118	12.402	6.181

15	NUT	1	A194 8
14	SPRING WASHER	1	304
13	HANDLE	1	STAINLESS STEEL
12	GLAND	1	304
11	PACKING	1	RPTFE
10	STEM WASHER	1	RPTFE
9	STEM	1	A276 316
8	NUT	-	A194 8
7	SPRING WASHER	-	304
6	HEXAGON HEAD BOLT	-	A193 B8
5	BODY	1	A351 CF8M
4	BALL	1	SS316
3	SEAT	2	RPTFE
2	GASKET	2	RPTFE
1	BONNET	2	A351 CF8M
NO.	DESCRIPTION	Q' TY	MATERIAL

MARK	BEFORE MODIFIED	AFTER MODIFIED	DATE				
DRA.		APP.					SCALE
CHK.		DATE					

3PC Ball Valve
 1000PSI, Extended Weld